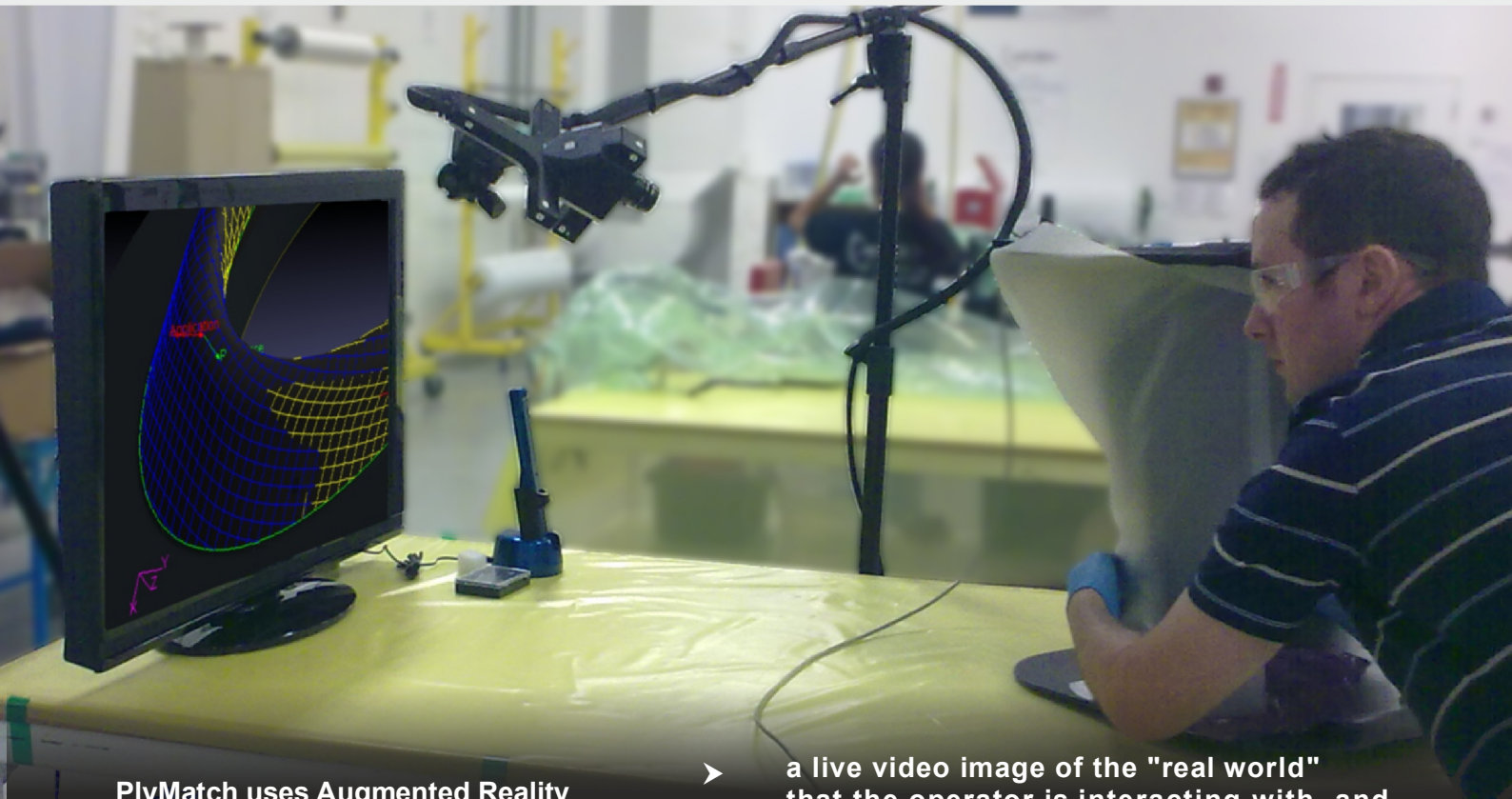


# PlyMatch™

## Ply Placement Visual Technology

In the manufacture of composite structural components by manual lay-up, accuracy in ply placement as well as quality assurance regarding the correct ply orientation and sequence are critical.



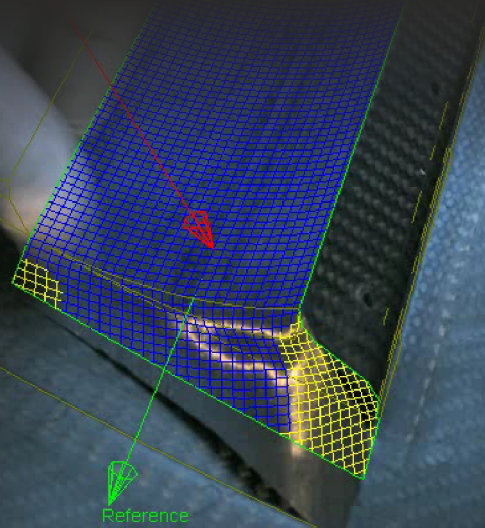
PlyMatch uses Augmented Reality to display together on a large screen:

- a live video image of the "real world" that the operator is interacting with, and
- a computer-generated image of the structure and composite ply being assembled.

*"The PlyMatch systems we have in place are utilized daily eliminating expensive templates and radically decreasing time to first article delivery."*

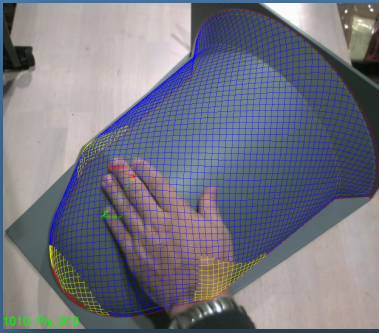
*The ability of the operator to move the mold when working with these complex parts is one other advantage, particularly in complex ducting."*

**Leigh Sargent, President of Applied Composites Engineering in Indianapolis, USA.**

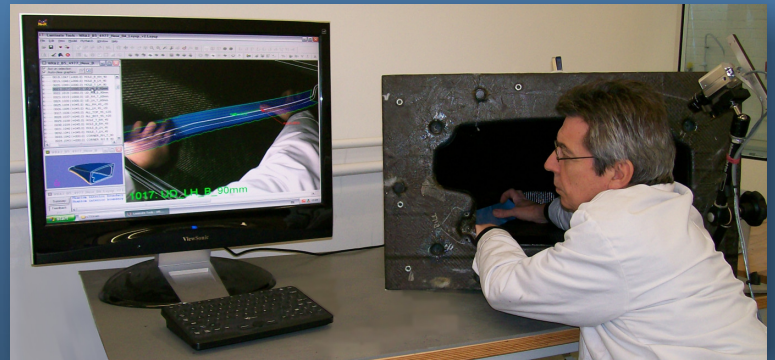




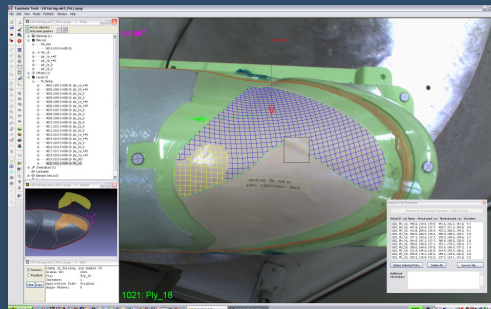
# PlyMatch KEY BENEFITS



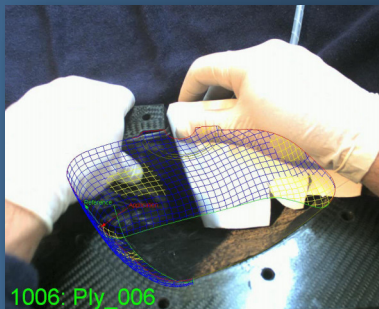
Excellent for  
highly curved parts



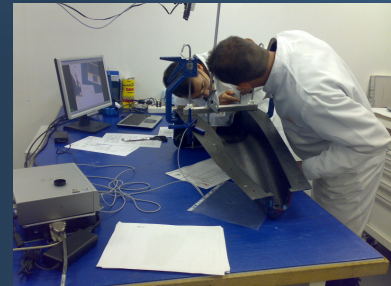
Can work inside cavities



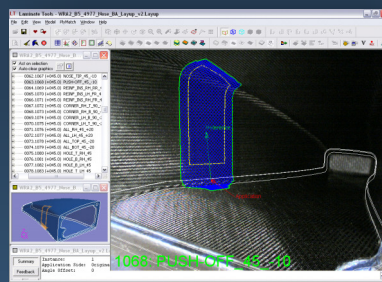
Allows deviation  
measurements



Can show  
full draping details,  
or other manufacturing data



Mould can be moved at all times  
without the need for recalibration



Can be used directly  
with Laminate Tools or  
with any CAD system



Alternative use  
purely as wireless CMM  
(Coordinate Measurement Machine)

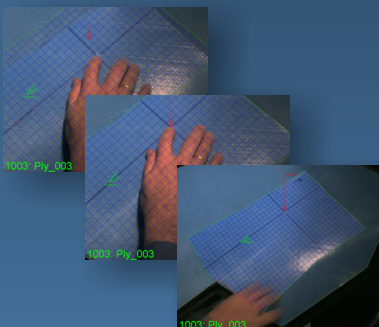
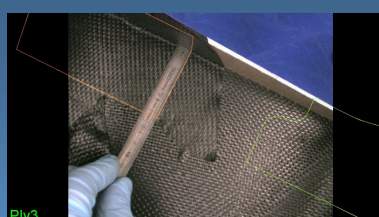


Image or Video recording  
enhances Quality Assurance



Versatile for  
templating

**anaglyph**  
London  
United Kingdom  
sales@anaglyph.co.uk  
www.anaglyph.co.uk

Copyright © 2022 Anaglyph Ltd

International Patent held